

# MCF - AggieFab joint Open House

Giesecke Engineering Research Building (GERB)

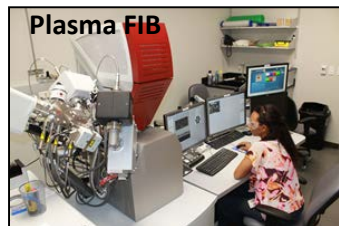
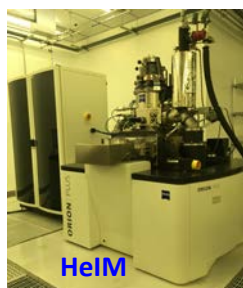
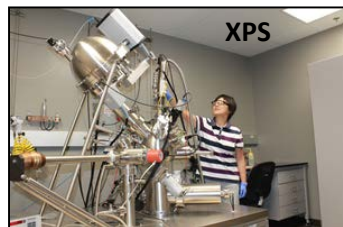


Come and learn about the **analytical** and **fabrication** instruments at the :

- ✓ **Materials Characterization Facility (MCF)**
- ✓ **AggieFab Nanofabrication Facility (AggieFab)**

## Tuesday November 14, 2017

GERB is located at 1617 Research Parkway (<http://aggiemap.tamu.edu/?Bldg=1611>)



10:00 -10:30AM	Short presentation about capabilities at the MCF	<b>Dr. Radovic</b> (MCF Director)	GERB 154
10:30 – 11:00AM	Short presentation about capabilities at AggieFab	<b>Dr. Han</b> (AggieFab Director)	GERB 154
11:00AM – 12:00PM	Focused Ion Beam (FIB) Overview	<b>Dr. Miller</b> (from TESCAN)	GERB 154
11:00AM – 16:00PM	MCF and AggieFab tours will be running every hour		

**Note:** Anyone interested in attending the open house should sign up by registering [here](#).

**Free Parking available**

**Refreshments will be served**