

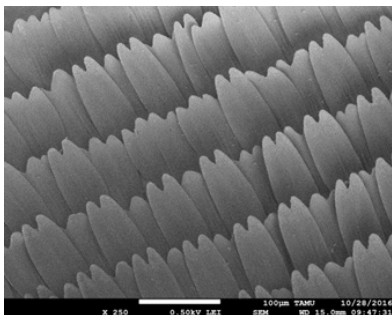
MCF Lunch Seminar Series 2017

Giesecke Engineering Research Building (ERB 154)

March 21

12:00-1:00PM

Basics of Scanning Electron Microscope (SEM)



Butterfly wings

SEM can provide information about a material's topography, morphology, phase distribution, compositional differences, and much more. This seminar will discuss the basic principles, application, and limitation of the SEM.

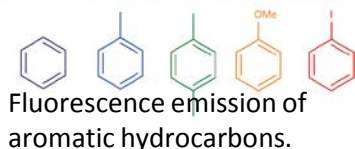
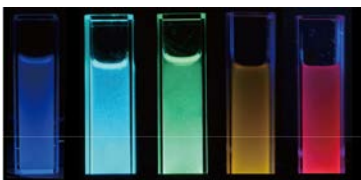
Speaker: Dr. Yordanos Bisrat

Register as seats are limited : ybisrat@tamu.edu

March 30

12:00-1:00PM

Photoluminescence: Theory and Applications



Photoluminescence is the emission of light from a material after the absorption of photons. It can occur in a variety of materials ranging from dyes, semiconductors, minerals, and proteins. This seminar will cover the basic theory, its applications in materials science, and type of measurements we can perform at the MCF.

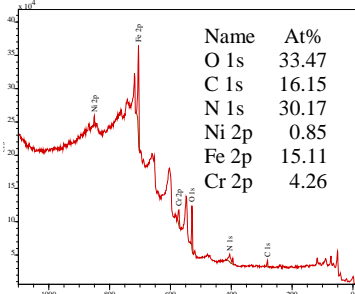
Speaker: Dr. Amanda Henkes

Register as seats are limited : amandahenkes@tamu.edu

April 4

12:00-1:00PM

An introduction to X-ray/UV Photoelectron Spectroscopy (XPS/UPS)



Elemental composition of a stainless steel surface

This seminar will cover basic concept, application and limitation of the technique. XPS/UPS is mainly for study of surface elemental composition, chemical and electronic state, experimental molecular orbital energy and material work function.

Speaker: Dr. Jing Wu

Register as seats are limited : jingwu@tamu.edu

Light refreshments will be provided

Free Parking